



# **Wireless Local Area Network Configuration Guide For Windows 7 (eduroam)**

**College of Professional and Continuing Education  
The Hong Kong Polytechnic University**

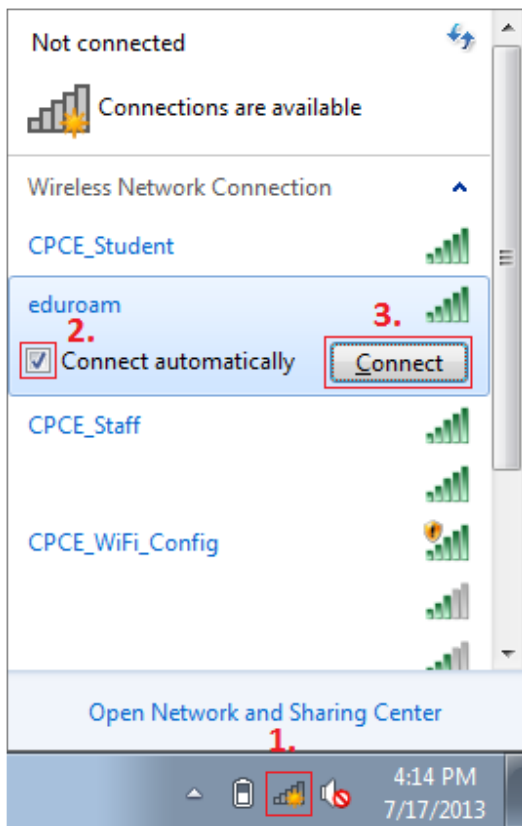
**Student Version**

**Version 1.3**

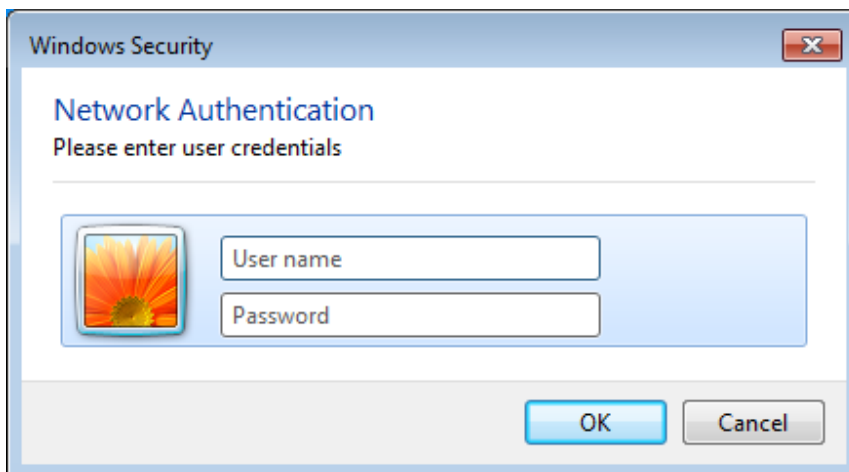
HELPDESK	Location	Tel no.
For HHB	11/F Computer Center	3746-0818
For WK	S5/F Computer Center	3746-0819

Email: [pfitoper@cpce-polyu.edu.hk](mailto:pfitoper@cpce-polyu.edu.hk)

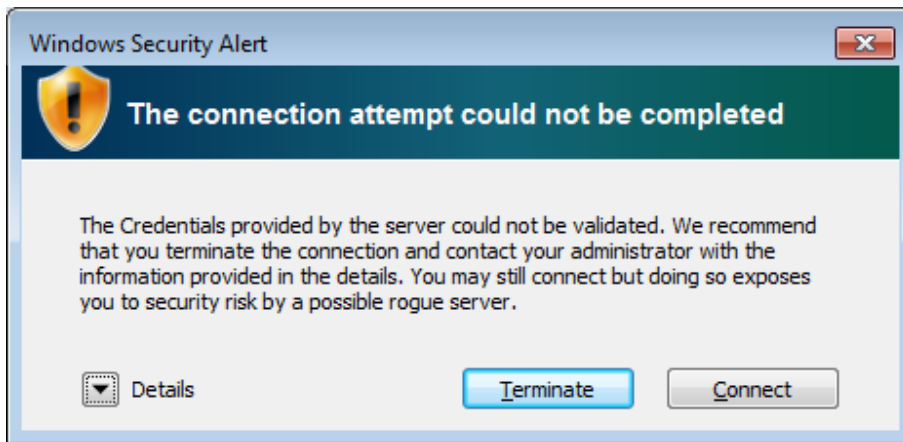
---



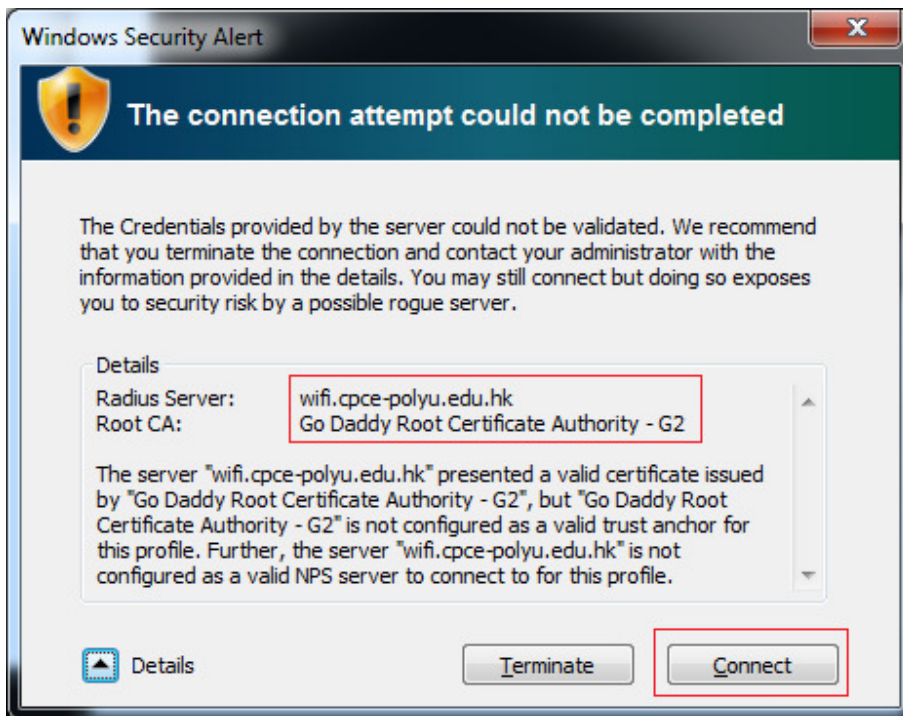
- 1.1. Click the “**Network**” icon on the taskbar
- 1.2. Select “**eduroam**” and check “**Connect automatically**”
- 1.3. Click “**Connect**”



2. Enter your account information (**StudentID@cpce.hk & Password**)  
User must enter **@cpce.hk** after your **StudentID** in the user name field



3. Click “**Details**” to expand more information



4.1. Check if correct certificate details are shown

Radius Server: **wifi.cpce-polyu.edu.hk**

Root CA: **Go Daddy Root Certificate Authority - G2**

4.2. Click “**Connect**” after verification

--- End ---